

HD Living

FALL 2007, VOLUME 1, ISSUE 1

LUXURY LIFESTYLE MEETS LUXURY ELECTRONICS

www.myhtsa.com

JUST-FOR-YOU GEMS

>> PLUS:

ESCAPE TO SERENITY IN THE SEYCHELLES ISLANDS

A CONNOISSEUR'S WINEMAKER

PRIVATE JETS

LUXURY STADIUM SUITES

AUTOMATED DREAM HOMES



A Sophisticated Single-life System

Northern California dealer creates a bachelor's heaven.

>> by KRISSEY RUSHING



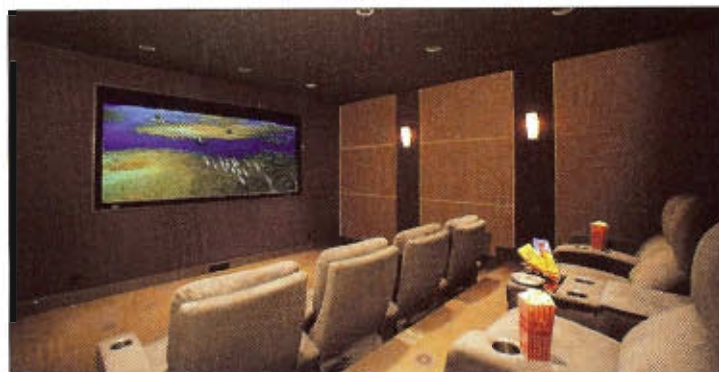
A BACHELOR'S PAD HAS TO BE SMOOTH AND ENTERTAINING BY ITS VERY NATURE.

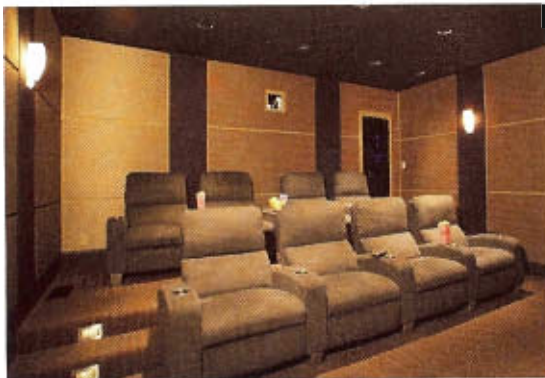
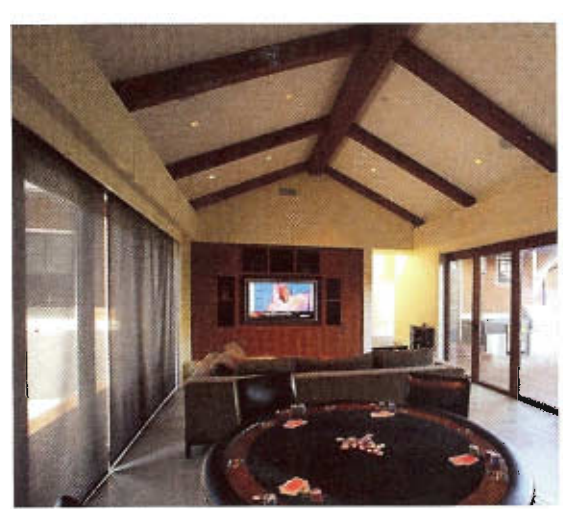
The goal for Century Stereo in this Northern California home was to have an audio and video distribution system that would provide a centralized location for a/v sources and distribute movies and music to the master bedroom, media room (complete with high-style poker table), the office, the gym and the dedicated home theater.

The wow factor enters the equation when the homeowner pauses *The Bourne Ultimatum* in the media room and retires to the bedroom to resume watching the movie stored on the Kaleidescape movie server on a different TV. This level of sophistication is

thanks to the Elan System12, which provides the distribution controlled by Olè keypads and Universal Remote's MX-950 and MX-3000 remote control.

The bedroom gets even slicker when a Hitachi 42HDX99 plasma rises out of custom cabinetry on a Chief CM2-L40 lift as the Lutron Sivoia QED roller shades automatically drop to cover the window behind. While impressive, building this cabinetry proved to be one of the home's biggest challenges. "We were working with the cabinet maker to design a cabinet for a plasma lift that hadn't even shipped yet," says Bill "Wes" Westrum, systems designer. The lift is unique because it raises the plasma high enough off the





cabinet to where you can see it when you are relaxing in bed. "When we finally got the lift in-house, we designed the cabinetry around it. The result was a gorgeous cabinet that looks like it belongs in the room and technology that is appropriately hidden when not in use."

But bragging rights don't stop there. As a Silicon Valley mover and shaker, the client was very knowledgeable technically. "He pretty much knew what he wanted, but it was my job to come up with solutions or recommendations for product and user interfaces — picking gear that fits his needs best in terms of usability and the design theme in the home." For his home theater, the client wanted a picture-perfect image and chose to go with a CinemaScope 2.35:1 image, courtesy of the Runco VX-6000D DLP projector and CineWide autoscope lens shining on a 120-inch Stewart Filmscreen Electrimask screen with aspect-ratio control in the home theater. "You just can't beat the immersive experience of a 2.35:1 image," says Wes. This bachelor's toys are stored in an equipment rack that is proudly displayed in the theater behind smoked glass doors.

The Rotel RSP-1068 surround processor and RMB-1077 seven-channel amplifier, along with B&W's in-wall CWMLCR8/CWMDS8 and James Loudspeaker 110SDX in-wall subwoofers provide

incredible surround sound but in a discreet form factor for this appropriately minimalist theater design. Acoustic Innovations Eurotech chairs allow up to eight guests to lounge in style, surrounded by bone-shaking sound and with clear views to the screen.

The job, which Century Stereo landed by referral, spanned nearly two years — beginning in August 2005, with the client moving in February 2007. The total cost of material and labor for the a/v systems was \$233,000, with \$146,000 dedicated to the theater alone. The time and effort was worth the payoff, however. "This is the ultimate place for the client and his buddies to hang out, play poker, listen to music, watch a movie, play pool, barbecue, you name it," says Wes. "It's a bachelor pad, but with a high-end, high-tech touch." ■

